

TOKAREV★USA

TX3 12



PUMP - ACTION SHOTGUN INSTRUCTION MANUAL



USER MANUAL



READ THE INSTRUCTIONS AND
WARNINGS IN THIS MANUAL CAREFULLY
BEFORE USING THIS FIREARM



ASSEMBLY VIDEO

Serial No. _____

Date Purchased: _____

Purchased From: _____

GUN SAFETY RULES

Observe these rules of safe gun handling.

1. Always keep the muzzle pointed in a safe direction. Watch the muzzle at all times: never point a gun, accidentally or intentionally, at any person or anything you do not intend to shoot. Identify the target before shooting; do not shoot at sounds.
2. Always treat a gun as if it is loaded —it may be!
3. Keep your finger off the trigger while operating the action and at all other times until you are ready to shoot.
4. Keep the safety “on” or in the “safe” position at all times until you are ready to fire.
Do not rely on your gun's safety, the safety on any gun is a mechanical device and is not intended as a substitute for common sense or safe gun handling.
5. Learn how your gun functions and handles. If you do not thoroughly understand the proper use and care of your gun, seek the advice of someone who is knowledgeable.

-
6. Do not alter or modify any part of the firearm.
 7. Store guns unloaded, separate from any ammunition, and out of the reach of children.
 8. Be sure the barrel is clear of any obstructions before loading. Make it a habit to check the barrel every time before loading.
 9. Be sure you have and use the proper ammunition. A 20 gauge shell will enter a 12 gauge chamber far enough so that a 12 gauge shell can be loaded behind it. Also, a 3 inch shell may fit into a 2 3/4 inch chamber, but the crimp at the mouth of the shell will not unfold into the forcing cone. If either of these things occur and you fire the gun, the gun will explode, damaging the gun and possibly causing serious injury or death to you and those around you.
 10. Wear protective shooting glasses and adequate ear protection when shooting.
 11. Never climb or jump over anything, such as a tree, fence, or ditch, with a loaded gun. Open the Breach, remove the shell from the magazine and hand the gun to someone else or place it on the ground on the other side of the obstacle before crossing it yourself. Do not lean a gun against a tree or other object; it could fall and possibly discharge.
 12. Do not shoot at a hard surface or at water. Projectiles and shot can ricochet or bounce off and travel in unpredictable directions with great velocity.
 13. Never transport a loaded gun. Do not place a loaded gun into a vehicle. The gun should be unloaded and placed into a case when not in use.
 14. Never drink alcoholic beverages before or during shooting.

ABOUT YOUR PUMP ACTION SHOTGUN

Your shotgun is manually operated. Once a cartridge has been fired, the locking lug in the bolt moves down, unlocking the gun. The forearm can then be moved to the rear and forward again, ejecting and loading a new cartridge.

To open the bolt without firing the gun, depress the action bar lock, located just beside and forward of the trigger. This allows for opening the action without dry firing.

The magazine tube will only accept 5 rounds, 2 3/4. shells or 4 rounds, 3" shells

Please check if your shotgun model includes interchangeable chokes.

SAFETY SWITCH OR BUTTON

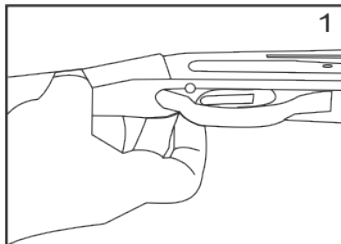
The safety is designed to stop the trigger mechanism.

DON'T RELY ON YOUR GUN'S SAFETY. TREAT EVERY GUN AS IF IT WERE LOADED AND READY TO FIRE.

The safety on any gun is a mechanical device, and it is not intended as a substitute for common sense or safe gun handling. Always keep the muzzle pointed in a safe direction.

A- The safety is located behind the trigger, and provides protection against accidental or unintentional discharge under normal usage when properly used.

B- To engage the safety, push the button so that it protrudes from the right side of the gun and the **RED BAND MARKING CAN NOT BE SEEN**. The safety should always be in the "on" or "safe" position until you intend to fire the gun. (Photo 1)

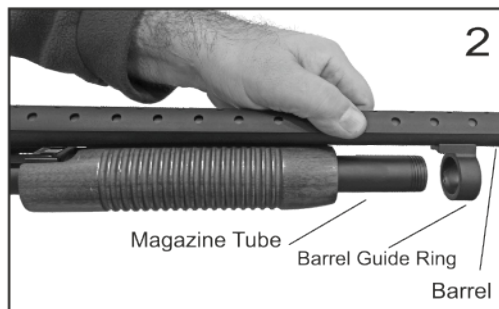


C- When you are ready to fire the gun, press the safety button to the “off” position so that the safety protrudes from the left side of the gun and the **RED BAND MARKING IS SHOWING**.

DANGER: The gun will fire when the trigger is pulled intentionally or accidentally when the **RED BAND MARKING IS SHOWING**.

ASSEMBLY

1. Remove the magazine cap.
2. Press upward on the action bar lock. Pull the forearm approximately half way rearward.
3. Hold the barrel ahead of the barrel guide ring (See picture 2).



Slide the barrel guide ring over the magazine tube. Clean the barrel following the instructions on Page 8.

5. Press upward on the action bar lock.
6. Align the ejector on the inside of the barrel with the slot in the bolt.
7. Carefully set the barrel into the receiver. **DO NOT FORCE IT!**
8. Replace the magazine cap. Tighten.

DISASSEMBLY

Warning : Make Sure the gun is unloaded!



1) After verifying that the firearm is unloaded, remove the magazine nut by rotating in the counterclockwise direction.



2) Push the forearm forward to remove the barrel, forearm assembly and bolt from the receiver.



3) Lift the barrel off and then remove the forearm assembly and bolt by sliding it off of the magazine tube.



4) Lift the bolt directly up and off of the bolt carrier, which is a part of the forearm assembly. Do not disassemble these parts any further than this. At this point, you will have adequate access for cleaning and maintenance of these parts.



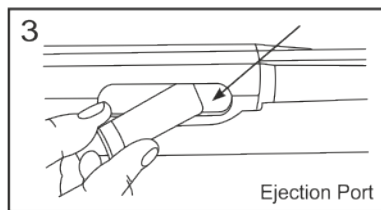
5) Using a drift and a hammer, remove the two fire control group retaining pins. Minimal force is required.



6) Remove the fire control group by pulling down and away from the bottom of the receiver. Do not disassemble the fire control group any further from this point. You now have adequate access to the receiver and fire control group parts for cleaning and maintenance.

LOADING YOUR SHOTGUN -ONE SHELL ONLY-

1. Put safety in the "on" position.
2. Point the gun in a safe direction.
3. Push up on the action bar lock.
4. Pull the forearm completely to the rear and carefully hold it for the return spring models.
5. Put one shell through the ejection port, making sure it is the correct gauge and length. (See picture 3)
6. Push the forearm forward and close the action.

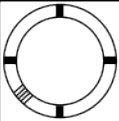
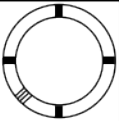
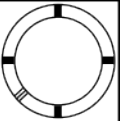
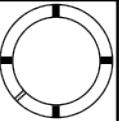



FULLY LOADING YOUR SHOTGUN

1. Put safety in the "on" position.
2. Point the gun in a safe direction.
3. Push up on the action bar lock.
4. Pull the forearm completely to the rear and carefully hold it for the return spring models.
5. Put one cartridge through the ejection port, making sure it is the correct gauge and length.
(See Picture 3)
6. Push the forearm forward and close the action.
7. Push a cartridge upward against the bottom of the lifter (See picture 4)
8. Push one (1) to five (5) cartridges, one at a time, fully forward into the magazine tube.

USAGE OF CHOKE TUBES **(IF YOUR SHOTGUN INCLUDES)**

Note : Largest diameter choke installed in barrel, smaller chokes in box (safety).

	SKEET	IC	M	IM	F
CHOKE TUBE					
BBLS	CL	★★★★	★★★	★★	★

The choke controls how open or tight the pattern of the shot will be. The chart below lists the chokes available (from open to tight), and the tick marks that indicate the specific choke.

Never fire your gun or run cleaning tools through a barrel that uses a choke tube without having a choke installed. The threads of the choke tube and the internal threads of the barrel should be cleaned after each use and before installation of the tube.

To install a tube, insert the tube into the muzzle end of the barrel and tighten with your fingers. Once the tube is finger tightened, tighten the rest of the way with the appropriate choke tube wrench until the tube is snug. DO NOT overtighten or forcefully tighten with the wrench.

IMPORTANT USAGE OF STEEL SHOT

The choke (before constriction) in all modern shotguns has been established based on the pattern performance of shot shells loaded with lead shot. When using steel shot shells, you will notice a different performance in pattern density versus the established lead shot pattern, because the steel shot is harder and lighter than lead shot.

You should be aware of the following differences and cautions:

Never shoot steel shot loads in a full choked barrel or an improved modified choked barrel. Doing so, may cause the barrel to swell or rupture. In general, steel shot fired with a modified choke will produce the equivalent of a lead full choke pattern. This will be true of all steel shot sized up to and including no. 2. The established improved cylinder chokes will produce the equivalent of a (lead) modified pattern.

All steel shot sized larger than no. 2, and including special sized such as F, T, etc., should be used only with improved cylinder chokes. These steel shot sizes, when used in an improved cylinder choke, will produce equivalent to (lead) full choke patterns. The established cylinder choke or bore will produce the equivalent of a modified (lead) pattern. Additional information concerning the use of steel shot is available from the ammunition companies.

MAINTENANCE AND CLEANING

Caution: Make sure the gun is UNLOADED.

1. Make sure the mating surface of the breech block and receiver is especially clean and lightly oiled with high quality gun oil. Do not use silicone or lanolin (Do not use WD-40).

2. Run an oil patch through the bore with a cleaning rod starting from the breech end. To prevent leading, use a cleaning solvent and brass brush to clean the bore periodically. Follow this cleaning with one or two clean oil patches. Important: If your gun is equipped with choke tubes, do not use a brass brush to clean the barrels without having a choke tube installed. Barrels that utilize choke tubes must also have the choke tubes removed to clean and oil the threads inside the barrel and the choke tubes themselves. This will protect the threads and prevent dirt build up that can cause tubes to become difficult to remove.

Never fire your gun without choke tubes snugly tightened in barrels. Do not overtighten choke tubes. Wipe all exposed metal surfaces with an oiled cloth before storing. Do not squirt or pour oil into the inside mechanism because it may hamper proper functioning. After extended periods of heavy use, your gun should be taken to a qualified gunsmith to have the action disassembled for professional cleaning and lubrication.

3. Care for your wood stock and forearm the same way you would a piece of furniture with the same finish.

STORAGE

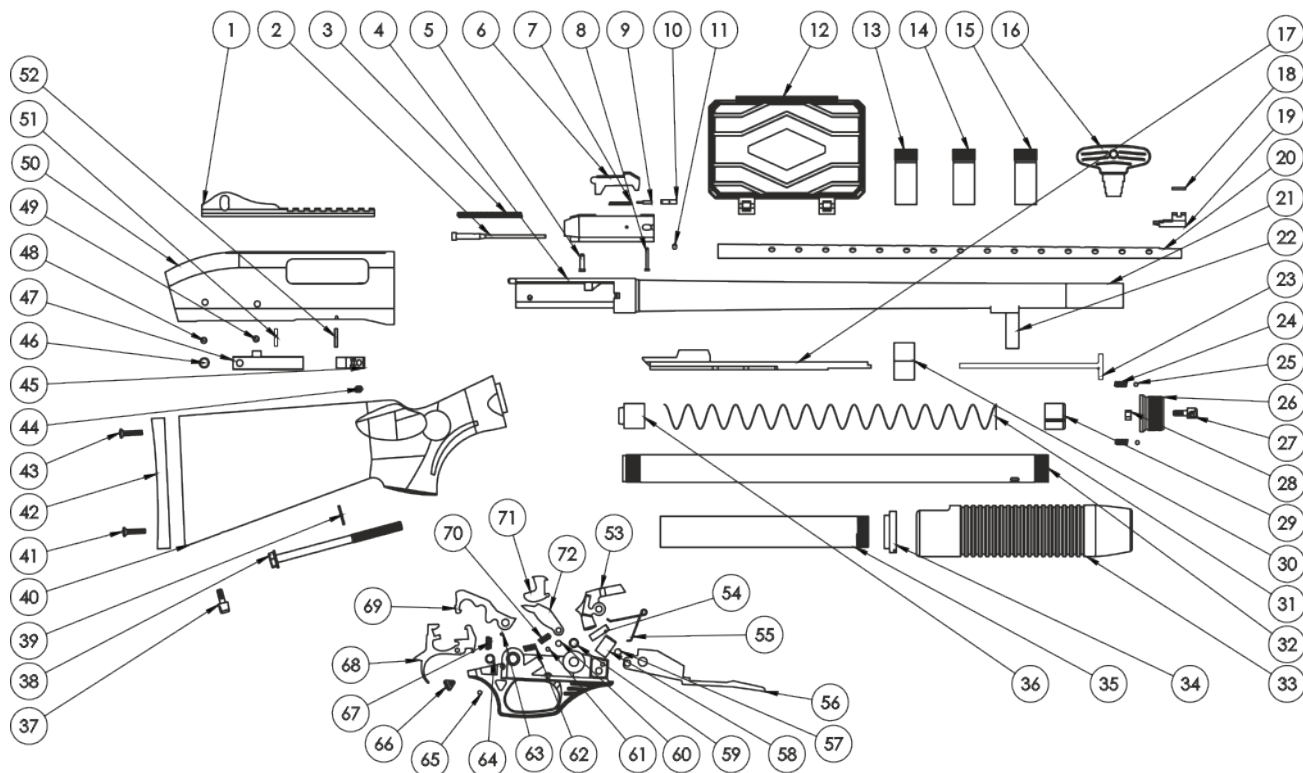
Clean thoroughly and oil your gun before storage. Store the gun in a case to prevent scratches and dents. Store your firearm in a dry place to prevent corrosion. Store the gun away from children and in a place where it cannot be obtained by those unauthorized to use it. Always store gun unloaded and separately from any ammunition.

HAZARDOUS MATERIAL WARNING

Discharging firearms in poorly ventilated areas, cleaning firearms, or handling ammunition, may result in exposure to lead and other substances known to cause birth defects, reproductive harm, and other serious injury. Have adequate ventilation at all times. Wash hands thoroughly after exposure.

THANK YOU

Thank you for purchasing a Tokarev shotgun. We are sure this gun will bring you years of hunting and/or shooting pleasure. Your satisfaction is the key to our success. Please let us know if we can be of service and relay any observations about your guns performance or appearance.



PART LIST

1 Rail	25 Barrel Nut Detents	49 FCG Retaining Pin
2 Firing Pin	26 Magazine Cap	50 Receiver
3 Spring , Firing Pin	27 Sling Mount	51 Pin , 2x11,80
4 Washer	28 Nut	52 Slotted Pin
5 Pin , Firing Pin Retaining	29 Steel Magazine Spring Retainer	53 Slide Lock Lever
6 Locking Block	30 Nut , Forearms	54 Cap , Lifter Dog Spring
7 Spring , Extractor	31 Spring , Magazine	55 Spring , Slide Lock Lever
8 Pin , Extractor	32 Magazine Tube	56 Lifter
9 Plunger , Extractor	33 Forearms	57 Pin , Lifter Dog
10 Extractor	34 Action Slide Tube Nut	58 Cap , Hammer Pivot
11 Pin , Fire Ejector	35 Action Slide Assembly	59 Tube , Trigger Frame Pin
12 Choke Box	36 Magazine Spring Follower	60 Pin
13 Choke , Full	37 Sling Mount	61 Pin
14 Choke , Modified III	38 Bolt , Stock	62 Spring , Hammer
15 Choke , Improve Cyliner II	39 Stock Bolt Lock Washer	63 Ball
16 Choke Wrench	40 Stock	64 Tube , Trigger Frame Pin
17 Bolt Carrier	41 Screw, Recoil Pad	65 Pin , Safety Pin
18 Fiberoptic	42 Recoil Pad	66 Safety
19 Front Sight Base	43 Screw, Recoil Pad	67 Safety , Spring Ball
20 Heat Shield	44 Spring , Shell Stop	68 Trigger
21 Barrel	45 Shell Stop	69 Hammer
22 Barrel Ring	46 Washer, Shell Stop	70 Spring, Lifter Dog
23 magazine bolcker	47 Feed Latch	71 Sear
24 hanguard nut detent spring	48 FCG Retaining Pin	72 Lifter Dog

TOKAREV★USA

Warranty

Tokarev USA stands behind the quality of our firearms. While age and wear cannot be covered under warranty, we believe defective parts, materials, and workmanship to be an unacceptable situation. We warrant our firearms to be free from defects in performance and workmanship for one year from the original retail purchase date. If you have a problem that is directly attributable to the quality of our product, we will make it right to include shipping and handling.

The Tokarev Limited Lifetime Warranty does not cover any issues related to abuse, improper maintenance, the use of incompatible aftermarket parts or any alteration of components. Likewise, damage caused by the use of improper or incompatible ammunition such as reloaded or other non-SAAMI spec ammunition will also void your warranty. Additionally, sales outside of the United States, unauthorized repair, and modifications to the firearm to include altering a serial number, shall not be covered under warranty.

Tokarev Lifetime Service Plan

Tokarev USA is committed to supporting our customers with services that are above and beyond what is expected. Beyond our 1-year warranty, our Lifetime Service Plan will repair any defect in material or workmanship for the lifetime of the firearm. The Tokarev Lifetime Service Plan will begin after the 1-year warranty has expired. The Lifetime Service Plan covers material defects; and does not include wear items such as cosmetics, choke tubes, grips, stocks, magazines, recoil/magazine tube springs or sights. This Lifetime Service Plan is offered in addition to the 1-year warranty and is not an extension of the warranty.

IMPORTANT WARRANTY INFORMATION

Tokarev USA firearms are warranted to function with factory produced, SAAMI spec ammunition and the original factory magazine. The use of handloads will void your warranty and the Lifetime Service Plan.

If you do experience a warranty issue, before sending your firearm, please contact us at info@tokarevusa.com or via phone 865-604-6894 for a Return Merchandise Authorization number. No firearms will be accepted without pre-approval and completion of this Return Merchandise Authorization.

Items not covered under Lifetime Service Plan:

- Cosmetics to include finish wear, scratches, or chemical damage
- Choke tubes
- Recoil springs/magazine tube springs
- Magazines
- After market accessories
- Repairs or modifications performed by anyone other than the authorized factory service center (Tokarev USA)
- Tokarev reserves the right to charge for labor, parts, and shipping to return your shotgun or pistol back to original factory specifications if it has been altered.

To review the full warranty and Limited Lifetime Service Plan, please visit www.tokarevusa.com.

TOKAREV★USA

TX3 12

info@sdsimports.com
114 SHERLAKE LANE
SUITE 18
KNOXVILLE, TN 37922
865.604.6894