

# TOKAREV★USA

## TX3 12 HAMMER



### PUMP - ACTION SHOTGUN INSTRUCTION MANUAL



USER MANUAL



READ THE INSTRUCTIONS AND  
WARNINGS IN THIS MANUAL CAREFULLY  
BEFORE USING THIS FIREARM



ASSEMBLY VIDEO

---

Serial No. \_\_\_\_\_

Date Purchased: \_\_\_\_\_

Purchased From: \_\_\_\_\_

## **GUN SAFETY RULES**

Observe these rules of safe gun handling.

1. Always keep the muzzle pointed in a safe direction. Watch the muzzle at all times: never point a gun, accidentally or intentionally, at any person or anything you do not intend to shoot. Identify the target before shooting; do not shoot at sounds.
2. Always treat a gun as if it is loaded —it may be!
3. Keep your finger off the trigger while operating the action and at all other times until you are ready to shoot.
4. Keep the safety “on” or in the “safe” position at all times until you are ready to fire.  
Do not rely on your gun's safety, the safety on any gun is a mechanical device and is not intended as a substitute for common sense or safe gun handling.
5. Learn how your gun functions and handles. If you do not thoroughly understand the proper use and care of your gun, seek the advice of someone who is knowledgeable.

- 
6. Do not alter or modify any part of the firearm.
  7. Store guns unloaded, separate from any ammunition, and out of the reach of children.
  8. Be sure the barrel is clear of any obstructions before loading. Make it a habit to check the barrel every time before loading.
  9. Be sure you have and use the proper ammunition. A 20 gauge shell will enter a 12 gauge chamber far enough so that a 12 gauge shell can be loaded behind it. Also, a 3 inch shell may fit into a 2 3/4 inch chamber, but the crimp at the mouth of the shell will not unfold into the forcing cone. If either of these things occur and you fire the gun, the gun will explode, damaging the gun and possibly causing serious injury or death to you and those around you.
  10. Wear protective shooting glasses and adequate ear protection when shooting.
  11. Never climb or jump over anything, such as a tree, fence, or ditch, with a loaded gun. Open the Breach, remove the shell from the magazine and hand the gun to someone else or place it on the ground on the other side of the obstacle before crossing it yourself. Do not lean a gun against a tree or other object; it could fall and possibly discharge.
  12. Do not shoot at a hard surface or at water. Projectiles and shot can ricochet or bounce off and travel in unpredictable directions with great velocity.
  13. Never transport a loaded gun. Do not place a loaded gun into a vehicle. The gun should be unloaded and placed into a case when not in use.
  14. Never drink alcoholic beverages before or during shooting.

## **ABOUT YOUR PUMP ACTION SHOTGUN**

Your shotgun is manually operated. Once a cartridge has been fired, the locking lug in the bolt moves down, unlocking the gun. The forearm can then be moved to the rear and forward again, ejecting and loading a new cartridge.

---

To open the bolt without firing the gun, depress the action bar lock, located just beside and forward of the trigger. This allows for opening the action without dry firing.

The magazine tube will only accept 5pcs, 2 3/4. shells or 4pcs, 3" shells

Please check if your shotgun model includes interchangeable chokes.

## **SAFETY SWITCH OR BUTTON**

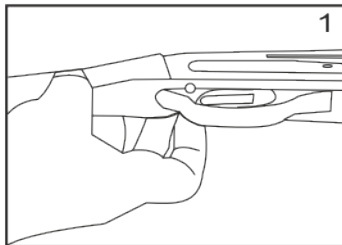
The safety is designed to stop the trigger mechanism.

**DON'T RELY ON YOUR GUN'S SAFETY. TREAT EVERY GUN AS IF IT WERE LOADED AND READY TO FIRE.**

The safety on any gun is a mechanical device, and it is not intended as a substitute for common sense or safe gun handling. Always keep the muzzle pointed in a safe direction.

A- The safety is located behind the trigger, and provides protection against accidental or unintentional discharge under normal usage when properly used.

B- To engage the safety, push the button so that it protrudes from the right side of the gun and the RED BAND MARKING CAN NOT BE SEEN. The safety should always be in the "on" or "safe" position until you intend to fire the gun. (Photo 1)



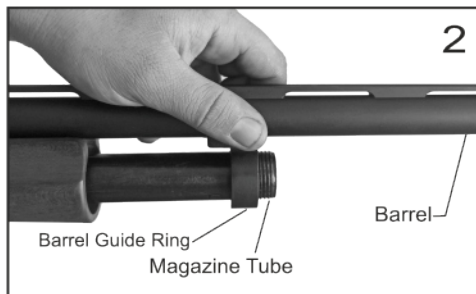
---

C- When you are ready to fire the gun, press the safety button to the "off" position so that the safety protrudes from the left side of the gun and the RED BAND MARKING IS SHOWING.

**DANGER:** The gun will fire when the trigger is pulled intentionally or accidentally when the RED BAND MARKING IS SHOWING.

## **ASSEMBLY**

1. Remove the magazine cap.
2. Press upward on the action bar lock. Pull the forearm approximately half way rearward.
3. Hold the barrel ahead of the barrel guide ring (See picture 2).



Slide the barrel guide ring over the magazine tube. Clean the barrel following the instructions on Page 8.

5. Press upward on the action bar lock.
6. Align the ejector on the inside of the barrel with the slot in the bolt.
7. Carefully set the barrel into the receiver. **DO NOT FORCE IT!**
8. Replace the magazine cap. Tighten.

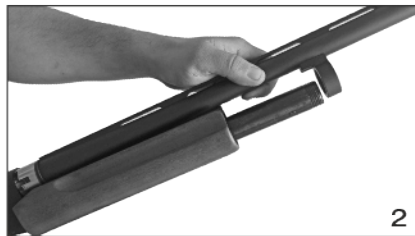
---

## DISASSEMBLY

**Warning :** Make Sure the gun is unloaded!



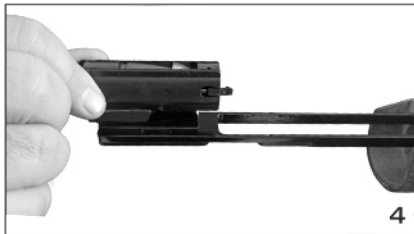
1) After verifying that the firearm is unloaded, remove the magazine nut by rotating in the counterclockwise direction.



2) Push the forearm forward to remove the barrel, forearm assembly and bolt from the receiver.



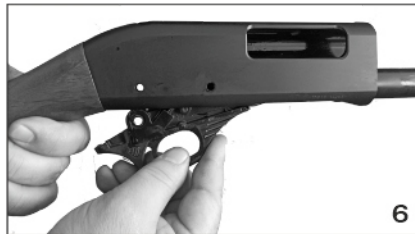
3) Lift the barrel off and then remove the forearm assembly and bolt by sliding it off of the magazine tube.



4) Lift the bolt directly up and off of the bolt carrier, which is a part of the forearm assembly. Do not disassemble these parts any further than this. At this point, you will have adequate access for cleaning and maintenance of these parts.



5) Using a drift and a hammer, remove the two fire control group retaining pins. Minimal force is required.

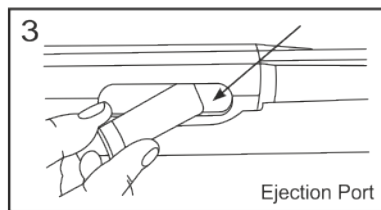


6) Remove the fire control group by pulling down and away from the bottom of the receiver. Do not disassemble the fire control group any further from this point. You now have adequate access to the receiver and fire control group parts for cleaning and maintenance.

---

## LOADING YOUR SHOTGUN -ONE SHELL ONLY-

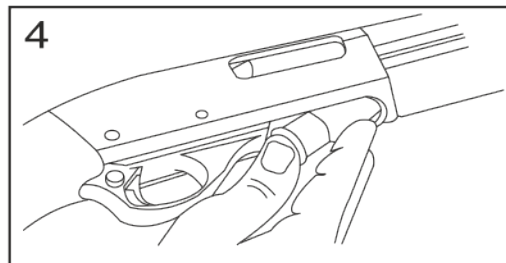
1. Put safety in the "on" position.
2. Point the gun in a safe direction.
3. Push up on the action bar lock.
4. Pull the forearm completely to the rear and carefully hold it for the return spring models.
5. Put one shell through the ejection port, making sure it is the correct gauge and length. (See picture 3)
6. Push the forearm forward and close the action.



## FULLY LOADING YOUR SHOTGUN

1. Put safety in the "on" position.
2. Point the gun in a safe direction.
3. Push up on the action bar lock.
4. Pull the forearm completely to the rear and carefully hold it for the return spring models.
5. Put one cartridge through the ejection port, making sure it is the correct gauge and length.  
(See Picture 3)
6. Push the forearm forward and close the action.
7. Push a cartridge upward against the bottom of the lifter (See picture 4)
8. Push one (1) to five (5) cartridges, one at a time, fully forward into the magazine tube.

FOR THE MODELS WITH RETURN SPRING IN THE FOREND, YOU DO NOT NEED TO PUSH THE FOREARM TO CLOSE THE ACTION, THIS WILL BE DONE AUTOMATICALLY, BY THE HELP OF THE SPRING. THE SPRING WILL CLOSE THE ACTION AT A VERY FAST RATE, USE CAUTION AND WATCH OUT FOR YOUR FINGERS AND LOOSE CLOTHING.



### **USAGE OF CHOKE TUBES (IF YOUR SHOTGUN INCLUDES)**

Note : Largest diameter choke installed in barrel, smaller chokes in box (safety).

	SKEET	IC	M	IM	F
CHOKE TUBE					
BBLS	CL	★★★★	★★★★	★★	★

The choke controls how open or tight the pattern of the shot will be. The chart below lists the chokes available (from open to tight), and the tick marks that indicate the specific choke.

Never fire your gun or run cleaning tools through a barrel that uses a choke tube without having a choke installed. The threads of the choke tube and the internal threads of the barrel should be cleaned after each use and before installation of the tube.



---

To install a tube, insert the tube into the muzzle end of the barrel and tighten with your fingers. Once the tube is finger tightened, tighten the rest of the way with the appropriate choke tube wrench until the tube is snug. DO NOT overtighten or forcefully tighten with the wrench.

## **IMPORTANT USAGE OF STEEL SHOT**

The choke (before constriction) in all modern shotguns has been established based on the pattern performance of shot shells loaded with lead shot. When using steel shot shells, you will notice a different performance in pattern density versus the established lead shot pattern, because the steel shot is harder and lighter than lead shot.

You should be aware of the following differences and cautions:

Never shoot steel shot loads in a full choked barrel or an improved modified choked barrel. Doing so, may cause the barrel to swell or rupture. In general, steel shot fired with a modified choke will produce the equivalent of a lead full choke pattern. This will be true of all steel shot sized up to and including no. 2. The established improved cylinder chokes will produce the equivalent of a (lead) modified pattern.

All steel shot sized larger than no. 2, and including special sized such as F, T, etc., should be used only with improved cylinder chokes. These steel shot sizes, when used in an improved cylinder choke, will produce equivalent to (lead) full choke patterns. The established cylinder choke or bore will produce the equivalent of a modified (lead) pattern. Additional information concerning the use of steel shot is available from the ammunition companies.

## **MAINTENANCE AND CLEANING**

Caution: Make sure the gun is UNLOADED.

1. Make sure the mating surface of the breech block and receiver is especially clean and lightly oiled with high quality gun oil. Do not use silicone or lanolin (Do not use WD-40).

---

2. Run an oil patch through the bore with a cleaning rod starting from the breech end. To prevent leading, use a cleaning solvent and brass brush to clean the bore periodically. Follow this cleaning with one or two clean oil patches. Important: If your gun is equipped with choke tubes, do not use a brass brush to clean the barrels without having a choke tube installed. Barrels that utilize choke tubes must also have the choke tubes removed to clean and oil the threads inside the barrel and the choke tubes themselves. This will protect the threads and prevent dirt build up that can cause tubes to become difficult to remove.

Never fire your gun without choke tubes snugly tightened in barrels. Do not overtighten choke tubes. Wipe all exposed metal surfaces with an oiled cloth before storing. Do not squirt or pour oil into the inside mechanism because it may hamper proper functioning. After extended periods of heavy use, your gun should be taken to a qualified gunsmith to have the action disassembled for professional cleaning and lubrication.

3. Care for your wood stock and forearm the same way you would a piece of furniture with the same finish.

## **STORAGE**

Clean thoroughly and oil your gun before storage. Store the gun in a case to prevent scratches and dents. Store your firearm in a dry place to prevent corrosion. Store the gun away from children and in a place where it cannot be obtained by those unauthorized to use it. Always store gun unloaded and separately from any ammunition.

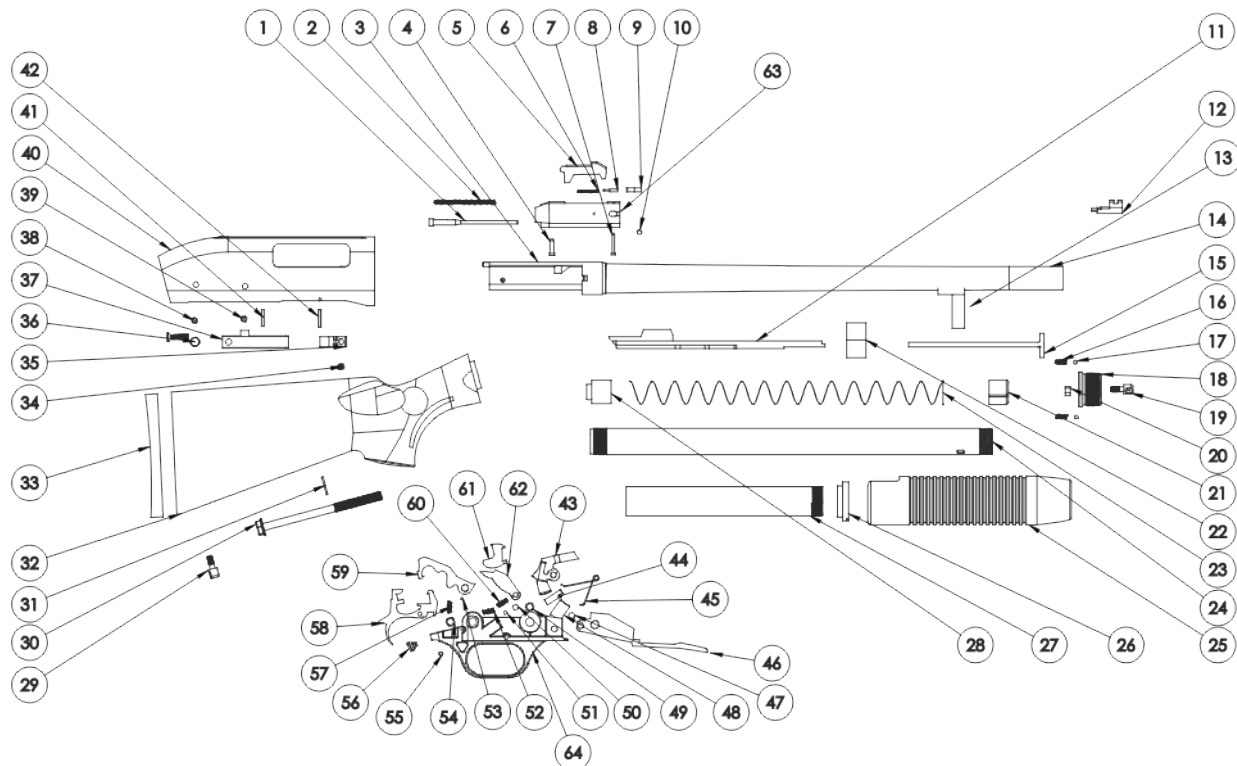
## **HAZARDOUS MATERIAL WARNING**

Discharging firearms in poorly ventilated areas, cleaning firearms, or handling ammunition, may result in exposure to lead and other substances known to cause birth defects, reproductive harm, and other serious injury. Have adequate ventilation at all times. Wash hands thoroughly after exposure.

## **THANK YOU**

Thank you for purchasing a Tokarev shotgun. We are sure this gun will bring you years of hunting and/or shooting pleasure. Your satisfaction is the key to our success. Please let us know if we can be of service and relay any observations about your guns performance or appearance.

# EXPLODED DIAGRAM



---

## TX3 12 HAMMER EXPLODED VIEW

1	Firing Pin	24	Magazine Tube	46	Lifter
2	Firing Pin Spring	25	Forearm	47	Hammer Pin
3	Barrel Hood	26	Forearm Retainer	48	Hammer Plunger
4	Firing Pin Retaining Pin	27	Forearm Tube	49	Lifter Pin Bushing
5	Bolt Lock	28	Magazine Follower	50	Lifter Actuator Pin
6	Extractor Spring	29	Sling Swivel Stud	51	Trigger Pin
7	Extractor Pivot Pin	30	Stock Bolt	52	Disconnecter Spring
8	Extractor Plunger	31	Stock Bolt Washer	53	Hammer
9	Extractor	32	Stock	54	Safety Detent
10	Ejector	33	Butt Pad	55	Safety Detent Pin
11	Bolt Carrier	34	Shell Catch Spring	56	Safety Button
12	Front Sight	35	Shell Catch	57	Safety Detent Spring
13	Barrel Ring	36	Feed Latch Spring	58	Trigger
14	Barrel	37	Feed Latch	59	Hammer
15	Magazine Restrictor Plug	38	Fire Control Group Retaining Pin Rear	60	Trigger Spring
16	Barrel Nut Detent Spring(2)	39	Fire Control Group Retaining Pin Front	61	Disconnecter
17	Barrel Nut Detent(2)	40	Receiver	62	Lifter Actuator
18	Barrel/Magazine Nut	41	Feed Latch Pivot Pin	63	Bolt
19	Sling Swivel Stud	42	Shell Catch Retaining Pin	64	Fire Control Group Housing
20	Sling Swivel Nut	43	Bolt Lock Lever		
21	Magazine Spring Retainer	44	Lifter Plunger		
22	Bolt Carrier Bushing	45	Bolt Lock Spring		
23	Magazine Spring				

---

# TOKAREV★USA

## Warranty

At Tokarev, we believe in the quality of our firearms.

Age and wear cannot be covered under warranty, as the mechanical parts and materials that make up firearms eventually wear out. However, defective parts, materials, and workmanship are not acceptable, and we stand behind our products. We warrant our firearms to be free from defects in performance and workmanship for one year from the original retail purchase date. If you have a problem that is directly attributable to the quality of our product, we will make it right to include shipping and handling.

If you abuse, improperly maintain, or alter the internal workings of your Tokarev firearm in any way, we will not warrant damage that occurs. Likewise, if you use improper or incompatible ammunition such as reloaded or other nonstandard ammunition, we will not warrant damage that occurs. Additionally, sales outside of the United States, unauthorized repair and modifications to the firearm, including altering a serial number shall not be covered under warranty.

If you have a problem with your firearm, please contact Tokarev directly at [info@sdsimports.com](mailto:info@sdsimports.com) or via phone at 865-604-6894. Before returning any firearm or parts, contact us for a Return Merchandise Authorization number. No firearms will be accepted without pre-approval and completion of this Return Merchandise Authorization.

### RETURN WITHOUT REPAIR

If we receive your firearm and determine that its damage is not covered under warranty, we will contact you with an explanation and an estimate of your cost for us to repair or refurbish it. If you prefer, we will return your firearm to you.

### FREE REPAIR AND RETURN

If your firearm is defective and we determine the defect is covered under warranty, Tokarev will repair or replace the firearm. After the repair of your firearm, we will ship it directly back to you, provided you originally shipped it to us from your address.

### LIMITATIONS ON WARRANTY

Our only responsibility in the case of breach of warranty is repair. SDS Imports shall not be liable for any other damages. This includes indirect or consequential damages.

PLEASE NOTE: This warranty gives you specific legal rights, and you may also have other rights, which vary from state to state, as some jurisdictions do not allow limitations on certain damages and warranties.

# **ТОКЛЯЕV★USA**

## **TX3 12 HAMMER**

info@sdsimports.com  
114 SHERLAKE LANE  
SUITE 18  
KNOXVILLE, TN 37922  
865.604.6894